

PARTS LIST					
ITEM	QTY	PART NO.	PART DESCRIPTION	LENGTH	UNIT WT.
1	2	X-MPOST	SUPPORT POST FOR EQUIPMENT PLATFORM ICE BRIDGE KITS		92.99
2	1	GRS24-12	24" X 12' GRIP SPAN BRIDGE CHANNEL		81.68
3	2	HHD24	24" UNIVERSAL CANTILEVER		14.10
4	4	X-232698	TRPD-HD SUPPORT PLATE - SITE PRO 1	29 1/2 in	8.72
5	2	X-MBP	BACKING PLATE FOR X-MPOST	8 in	8.48
6	4	SHCM-T	CHAIN MOUNT TIGHTENER BRACKET	3 in	1.84
7	4	SCP	CLAMP HALF, 1/2" x 5-3/4"		1.29
8	2	PC312	3-1/2" FENCE POST CAP		0.59
9	4	SPLICE	SPLICE FOR GRIP STRUT	7 3/8 in	0.53
10	4	X-124312	1/2" X 2" X 2" ANGLE SPACER; WITH 9/16" HOLE	2 in	0.53
11	8	X-UB1358	1/2" X 3-5/8" X 5-1/2" X 3" GALV U-BOLT		0.77
12	8	G58312	5/8" X 3-1/2" HDG HEX BOLT GR5		0.40
13	16	G58FW	5/8" HDG USS FLATWASHER	1/8 in	0.07
14	8	G58LW	5/8" HDG LOCKWASHER		0.03
15	8	G58NUT	5/8" HDG HEAVY 2H HEX NUT		0.13
17	4	G1203	1/2" X 3" HDG HEX BOLT GR5 FULL THREAD	3 in	0.22
18	4	G1202	1/2" X 2" HDG HEX BOLT GR5	2 in	0.18
19	16	G12FW	1/2" HDG USS FLATWASHER	3/32 in	0.03
20	24	G12LW	1/2" HDG LOCKWASHER	1/8 in	0.01
21	28	G12NUT	1/2" HDG HEAVY 2H HEX NUT		0.07
22	8	G3803	3/8" X 3" HDG HEX BOLT GR5		0.12
23	16	G38FW	3/8" HDG USS FLATWASHER		0.01
24	8	G38LW	3/8" HDG LOCKWASHER		0.01
25	8	G38NUT	3/8" HDG HEAVY 2H HEX NUT		0.03
TOTAL WT. #					383.35

TOLERANCE NOTES

TOLERANCES ON DIMENSIONS, UNLESS OTHERWISE NOTED ARE:
 SAWED, SHEARED AND GAS CUT EDGES ($\pm 0.030"$)
 DRILLED AND GAS CUT HOLES ($\pm 0.030"$) - NO CONING OF HOLES
 LASER CUT EDGES AND HOLES ($\pm 0.010"$) - NO CONING OF HOLES
 BENDS ARE $\pm 1/2$ DEGREE
 ALL OTHER MACHINING ($\pm 0.030"$)
 ALL OTHER ASSEMBLY ($\pm 0.060"$)

PROPRIETARY NOTE:
 THE DATA AND TECHNIQUES CONTAINED IN THIS DRAWING ARE PROPRIETARY INFORMATION OF VALMONT INDUSTRIES AND CONSIDERED A TRADE SECRET. ANY USE OR DISCLOSURE WITHOUT THE CONSENT OF VALMONT INDUSTRIES IS STRICTLY PROHIBITED.

DESCRIPTION

24" X 12' ICE BRIDGE
 FOR MODULAR PLATFORM
 PIPE LEGS

CPD NO.

DRAWN BY

ENG. APPROVAL

CLASS

SUB

DRAWING USAGE

CHECKED BY

PART NO.

MIBP-2412

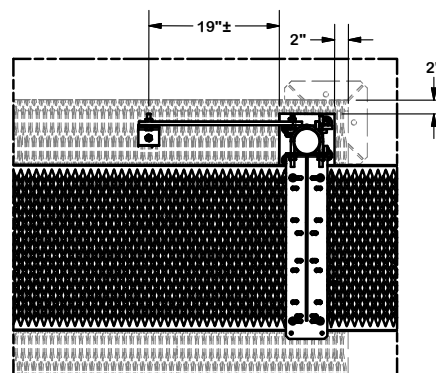
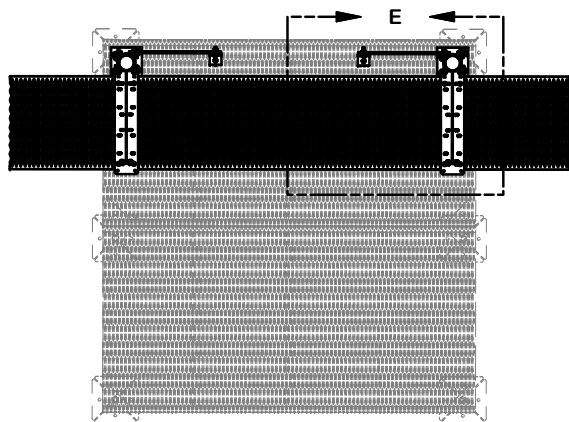
DWG. NO.

MIBP-2412

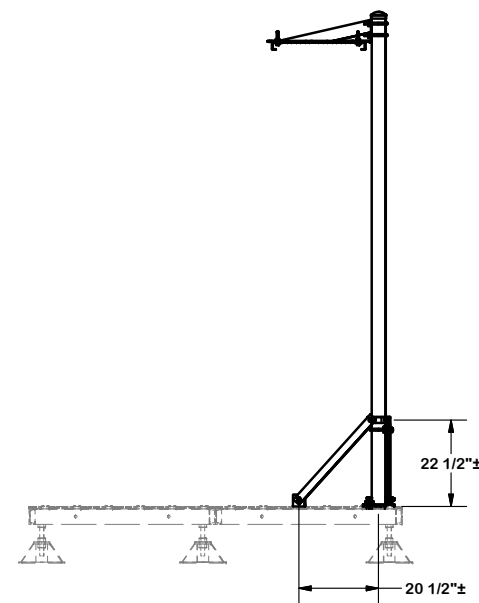
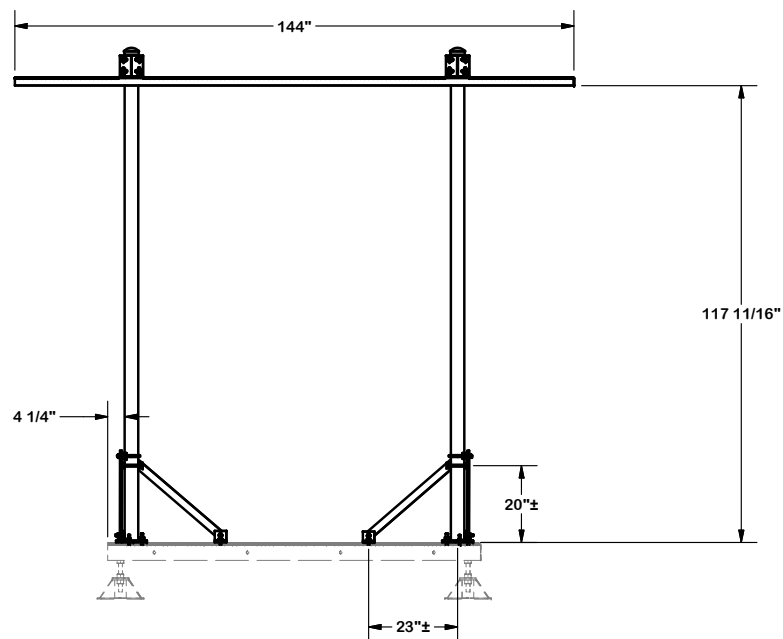


Engineering
 Support Team:
 1-888-753-7446

Locations:
 New York, NY
 Atlanta, GA
 Los Angeles, CA
 Plymouth, IN
 Salem, OR
 Dallas, TX



DETAIL E



TOLERANCE NOTES

TOLERANCES ON DIMENSIONS, UNLESS OTHERWISE NOTED ARE:
 SAWED, SHEARED AND GAS CUT EDGES ($\pm 0.030"$)
 DRILLED AND GAS CUT HOLES ($\pm 0.030"$) - NO CONING OF HOLES
 LASER CUT EDGES AND HOLES ($\pm 0.010"$) - NO CONING OF HOLES
 BENDS ARE $\pm 1/2$ DEGREE
 ALL OTHER MACHINING ($\pm 0.030"$)
 ALL OTHER ASSEMBLY ($\pm 0.060"$)

PROPRIETARY NOTE:
 THE DATA AND TECHNIQUES CONTAINED IN THIS DRAWING ARE PROPRIETARY INFORMATION OF VALMONT INDUSTRIES AND CONSIDERED A TRADE SECRET. ANY USE OR DISCLOSURE WITHOUT THE CONSENT OF VALMONT INDUSTRIES IS STRICTLY PROHIBITED.

DESCRIPTION

24" X 12' ICE BRIDGE
 FOR MODULAR PLATFORM
 PIPE LEGS

CPD NO.	DRAWN BY CEK 6/22/2016	ENG. APPROVAL
CLASS 81	SUB 01	CHECKED BY BMC 7/15/2016
DRAWING USAGE CUSTOMER		



A valmont COMPANY

Engineering
 Support Team:
 1-888-753-7446

Locations:
 New York, NY
 Atlanta, GA
 Los Angeles, CA
 Plymouth, IN
 Salem, OR
 Dallas, TX

PART NO.	MIBP-2412
DWG. NO.	MIBP-2412